

## Compatible 3G Data Cards\*2

3G Operator	Product name	Manufacturer & Model name
T-Mobile	web`n`walk card compact	Option GlobeTrotter GT Max E
T-Mobile	web`n`walk card wlan	Option GT Fusion+EMEA
T-Mobile	Mobile DSL 1800	Option GlobeTrotter HSPDA
Vodafone	Mobile Connect	Novatel Merlin U740 Option GT 3G+EMEA Huawei E620
N/A	N/A	Novatel Merlin XU870
N/A	N/A	Huawei E600 Huawei E630

Note:  
Additional compatible data cards may be added without prior notice.  
Please refer to <http://www.billion.com/compatible-3G.html> for updates of all compatible 3G data cards.

## Benefits

### Communication Flexibility via 3G/HSDPA

The BiPAC 7300GX router allows you to insert a 3G/HSDPA PC card into its built-in PC Card slot, enabling you to use a 3G/HSDPA, UMTS, EDGE, GPRS, or GSM Internet connection that makes a downstream rate up to 14.4Mbps\*\* possible. With the increasing popularity of the 3G standard, communication via the BiPAC 7300GX is becoming more convenient and widely available - allowing you to watch movies, download music on the road, or access e-mail no matter where you are. You can even share your Internet connection with others, no matter if you're in a meeting, or speeding across the country on a train.

### Always Online

The BiPAC 7300GX complies with worldwide ADSL standards, supporting download rates up to 12/24Mbps with ADSL2/2+, 8Mbps with ADSL and an upload rate up to 1Mbps. Using this technology you'll be able to enjoy high-speed ADSL and broadband multimedia applications such as interactive gaming, video streaming and real-time audio. Furthermore, the Annex M standard integrated into the BiPAC 7300GXA supports ADSL2/2+ for higher upload speeds by doubling the upload data rate. Planned support for auto-failover\*\*4 means that you'll be assured of a constant Internet connection - in case your ADSL line fails, the BiPAC 7300GX will connect via 3G to deliver uninterrupted connectivity.

### Double-layer Protection

An integrated 802.11g Wireless Access Point offers quick yet easy access with data encryption for added security. Wireless Protected Access (WPA-PSK/WPA2-PSK) and Wireless Encryption Protocol (WEP) support ensures the high-level data protection and WLAN access control. In addition, rich firewall security features such as SPI, DoS attack prevention and URL content filtering are integrated to provide unparalleled protection for Internet access. Enjoy the benefits of added security by simply pressing the Wi-Fi Protected Setup button to quickly and easily set up secure wireless communication.

## Features & Specifications

### ADSL Compliance

- Compliant with ADSL Standard
  - Full-rate ANSI T1.413 Issue 2
  - G.dmt (ITU G.992.1)
  - G.lite (ITU G.992.2)
  - G.hs (ITU G.994.1)
  - ADSL over ISDN/U-R2
- Compliant with ADSL2 Standard
  - G.dmt.bis (ITU G.992.3)
  - ADSL2 Annex M (ITU G.992.3 Annex M) (Available for BiPAC 7300GXA only)
- Compliant with ADSL2+ Standard
  - G.dmt.bisplus (ITU G.992.5)
  - ADSL2+ Annex M (ITU G.992.5 Annex M)

### Network Protocols and Features

- NAT, static routing and RIP-1/2
- Universal Plug-and-Play (UPnP) Compliant
- Dynamic Domain Name System (DDNS)
- Virtual Server and DMZ

### Firewall & Virtual Private Network (VPN)

- Built-in NAT Firewall
- Stateful Packet Inspection (SPI)
- Prevents DoS attacks including IP spoofing, land attack, Smurf attack, ping-of-death, TCP SYN flooding, etc.
- Packet Filtering - port, source IP address, destination IP address, MAC address
- URL Content Filtering - string or domain name
- Password protection for system management
- VPN pass-through

### Wireless 802.11g

- Compliant with IEEE 802.11g and 802.11b standards
- 2.4GHz - 2.484GHz frequency range
- Up to 54Mbps wireless operation rate
- 64-/128-bit WEP supported for encryption
- Wireless Security with WPA-PSK/WPA2-PSK support
- Wireless Distribution System (WDS) repeater function supported
- Wi-Fi Protected Setup

### Operating Environment

- Operating temperature: 0 - 40°C
- Storage temperature: -20 - 70°C
- Humidity: 20 - 95% non-condensing

\* Note:

- The router may require firmware modification for certain ADSL2/2+ Annex M DSLAMs.
- The 3G/HSDPA data rate is dependent on your local service provider and your 3G/HSDPA card.
- Specifications in this datasheet are subject to change without prior notice.
- The Auto-failover feature is planned for future release.

V.072507

Billion Electric Co., Ltd.

8F, No.192, Sec.2, Chung Hsing Road,  
Hsin Tien City, Taipei Hsien, Taiwan

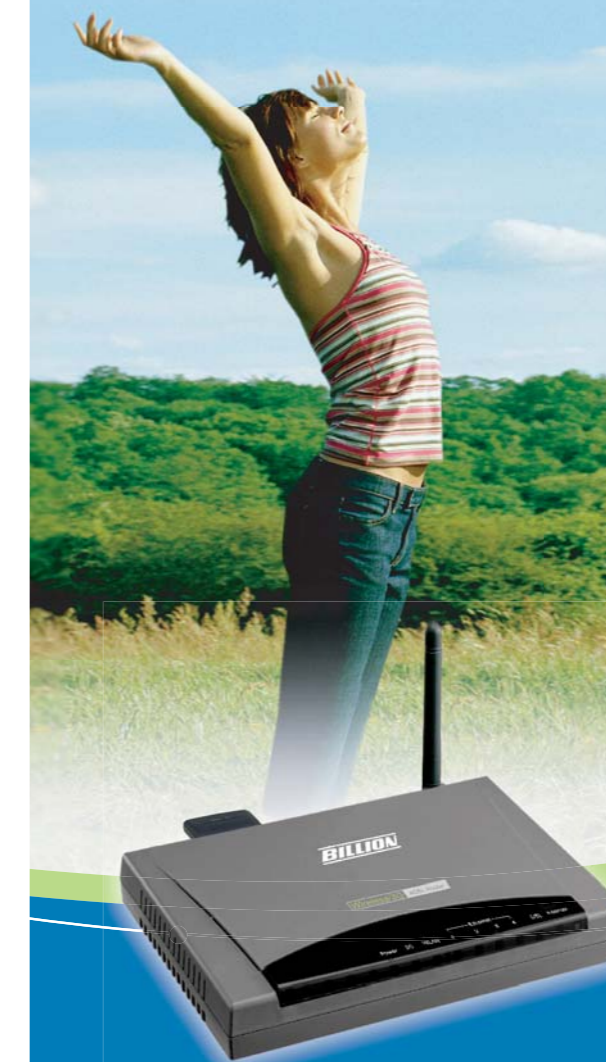
TEL : +886-2-2914-5665

FAX : +866-2-2918-6731, +886-2-2918-2895  
E-mail : sales@billion.com

[www.billion.com](http://www.billion.com)

**BILLION**

Connect anywhere, anytime!



**BiPAC 7300GX**

**3G/ADSL2+ Wireless Router**

**Mobile - Secure - Always online**

- 3G/ADSL for true always-on connectivity
- Mobility assured by 3G support
- Automatically switch between ADSL and 3G as needed
- Car adapter for ultimate portability

## BiPAC 7300GX 3G/ADSL2+ Wireless Router

Enjoy the freedom of secure, high-speed Internet connectivity at the home or office, or while on the road with Billion's compact BiPAC 7300GX dual-interface ADSL2+/3G firewall and router. Wired connections can benefit from the flexibility of the ADSL2+ standard, offering download speeds of up to 24Mbps using a standard telephone connection, while wireless connections profit from download speeds up to 14.4Mbps\*\* delivered via 3G/HSDPA, EDGE, UMTS or GPRS.

The BiPAC 7300GX is equipped with a built-in 4-port full-duplex 10/100 Switch so you can connect wired-Ethernet devices together. Directly connect up to four PCs or attach more hubs and switches to create a larger network as needed. Use the integrated Router function to share a blistering ADSL2+ or 3G-based Internet connection (requires a 3G data card, available separately), with automatic fail-over\*\* to ensure an always-on Internet connection in the event that one of your Internet services fails.

A 12V car adapter is bundled with the router to let you plug the charger into your car's cigarette lighter for mobility. The BiPAC 7300GX can also encode all 802.11g wireless LAN transmissions with WEP or WPA encryption to ensure that your data is protected, and boasts a DHCP Server and a powerful SPI firewall to protect against intruders and most known Internet attacks. Secure WLAN setup is simplified by the web browser-based configuration for easy access to the Internet wherever a 3G connection is available - whether you're seated at your desk or taking a cross-country train trip.

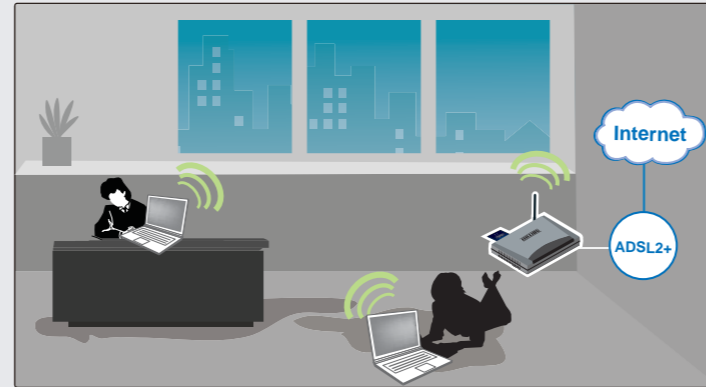
### Key Features

- Dual WAN interfaces for ADSL2+ and 3G connection
- Auto-failover feature to ensure an always-on connection\*\*
- 12V car charger adapter included for ultimate mobile connectivity
- High-speed Internet access with ADSL2/2+; backward compatible with ADSL
- One PC Card slot for inserting a 3G/HSDPA PC data card (Available from your service provider)
- 802.11g Wireless AP with WPA-PSK/WPA2-PSK support
- Wi-Fi Protected Setup feature makes setting up a secure network quick and easy
- Easy Sign-On (EZSO) and Web-based Configuration
- SOHO firewall security with DoS prevention and SPI
- Quality of Service control
- Compatible with 3G data cards provided by operators such as Vodafone, T-Mobile and many others

### Ideal for:

- home users
- office users
- event or meeting organizers
- public transport operators:  
e.g. long-distance bus operators

## Applications over 3G/ADSL networks



### At the desk

Enjoy all the benefits of high-speed ADSL connection right at your desk with the BiPAC 7300GX, offering a secure computing experience, with an integrated SPI firewall, DoS prevention and other robust security features.



### Anytime connection

The BiPAC 7300GX's auto-failover feature ensures maximum connectivity and minimum interruption by quickly and smoothly connecting to a 3G network in the event that the landline fails. The BiPAC 7300GX will then automatically return to the ADSL connection when it's restored - reducing connection costs. These features are perfect for office situations where a constant connection is paramount.



### In a meeting

The BiPAC 7300GX's innovative browser-based configuration allows you to quickly and easily set up a WLAN, so when you're at a meeting or training, your guests or participants can quickly and securely access the Internet via a 3G network to retrieve emails, share meeting minutes or training materials with their colleagues.

### What is 3G?

3G is the common name for third-generation digital mobile technology. It offers consistent services delivered via 3G/HSDPA, EDGE, or UMTS mobile telephony protocols.

Compared to 1G (analog wireless technology) and 2G (digital radio wireless technology such as GPRS), 3G offers faster data transfer rates up to 14.4Mbps\*\*.



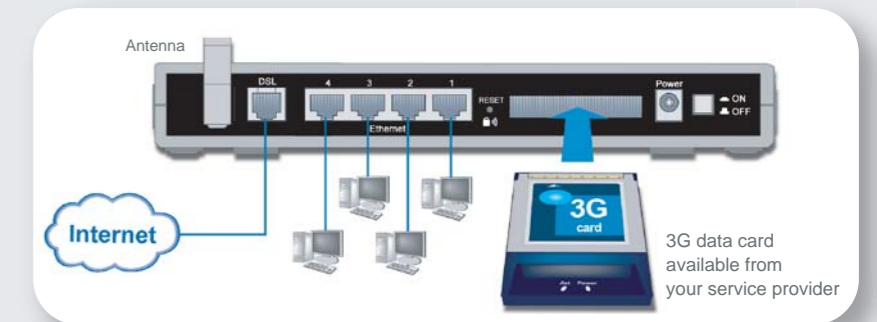
### In a car

The included 12V car-charger allows you to connect to the Internet whilst in your car - so you can keep the children entertained on a long road trip, or refer to online mapping sites when you need to be somewhere you're not familiar with.



### On public transport

By installing the BiPAC 7300GX, public transport operators can update passengers with real-time weather and event information, updated regularly via a 3G Internet connection, or offer business travelers Internet access that can be charged for to create greater income potential.



### At an event

When you're chilling out at a party or concert, the light-weight, portable BiPAC 7300GX frees you to instantly share your pictures or video clips of the event with friends and family -- so those close to you can share your enjoyment.