

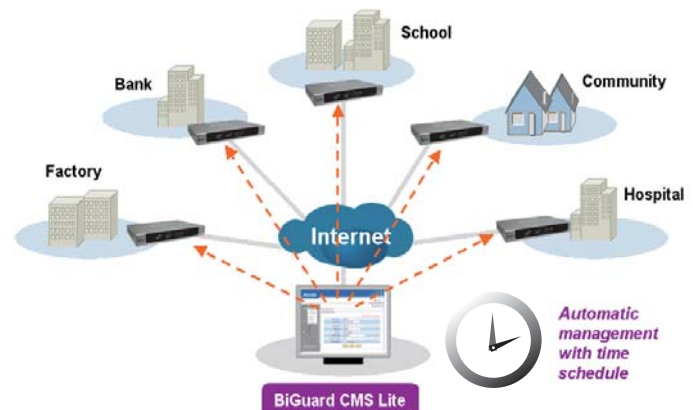
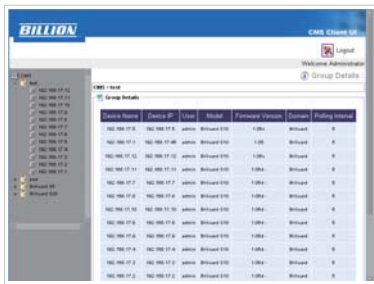
BiGuard CMS Series

Available products

BiGuard CMS Lite
BiGuard CMS

BiGuard Central Management System

At any time, small offices and SMBs with limited MIS resources require their service vendors to specially take care of their networking needs. The client-server-architecture BiGuard CMS series allows service providers that are capable of system integration or a total network solution to manage their end-customers' network devices remotely via a web-based interface. This management software provides service providers with remote configuration functions, such as data backup and restoration, firmware upgrades, on devices to centrally administer multiple customer devices either on demand or to a pre-defined schedule. The log function in the BiGuard CMS allows administrators to record device events, and thus to continuously track their status.



Key Features and Benefits

Saves maintenance effort

The BiGuard CMS series provides a service provider with a single system to manage all the remote network devices for their end customers to enforce the management policy from a central site. A one-to-many configuration feature in the BiGuard CMS minimizes the effort needed to manage various network devices at dispersed sites when implementing firewall policies, filtering rules and other global objects.

Highly secured management

All the managed data of a remote network device in the pipeline is encrypted with an HTTPS mechanism to avoid hacker attacks. The remote administrator identification from service providers is qualified and authorized.

Ease-of-use

A "click-on" web-based interface makes it easy to add devices, upgrade firmware and carry out all other remote configuration functions. It's even easy to install the BiGuard CMS series by using a setup Wizard.

Grouping device management

The devices can be clustered for group-based remote management instead of one-by-one. In addition, the administrator can choose to display the devices with a tree view or list view.

Automatic management with time schedule

What makes the BiGuard CMS series very convenient is that it allows the administrator to set up the management policies with time scheduling, for example back up data every 12 hours, or upgrade firmware at 8pm or after office hours. The policies will be automatically launched according to schedule without requiring an administrator onsite.

Flexible upgradesment

The firmware upgrades of remote network devices can be performed on demand, whenever the administrator thinks it is necessary. The new BiGuard CMS is available by upgrade from the previous BiGuard CMS Lite without the need to reconfigure existing settings.

More platforms supported

Using a Java-based design, the BiGuard CMS series supports hardware platform for Intel-X86-based devices and software platforms such as MS Windows XP, and later MS Windows 2000(*) and Linux(*).

Iconized topology map

The BiGuard CMS features displaying remote devices with icons in a topology map, deploying layered architecture. The administrator can manually add or remove devices from the layer architecture.

BiGuard CMS Lite

Native HTML/HTTPS interface between the remote device and BiGuard CMS
Data encryption and ID/password authentication for secure management
No client installation needed
Web-based user interface
Supports PostgreSQL
Firmware upgrade for single/grouped devices on demand or according to a schedule
Configuration backup for single/grouped devices on demand or at regular time intervals
Configuration restoration
Device connectivity checking
MS-IE to management device
Event logs of BiGuard CMS actions
Supports up to 256 devices
Supports BiGuard SSL VPN series security appliances
Ideal for service providers

BiGuard CMS (available in Q4, 2007)

XML/HTTPS interface between the remote device and BiGuard CMS
Data encryption and CMS server authentication by remote device for secure management
No client installation needed
Web-based user interface
Automatic device discovery
BiGuard CMS account management
Remote configuration management
Supports Java Database Connector (JDBC) Database Management Systems (DBMSs) - PostgreSQL, MySQL and MS SQL servers
Supports database backup and restoration
Firmware upgrade for single/grouped devices on demand or according to a schedule
Configuration backup for single/grouped devices on demand or at regular time intervals
Configuration restoration
Device connectivity check
Device model auto-detection
E-mail notification upon emergency event
Network topology map
Fault management – Alter, alarm, error, logs
Security – account management by access level for CMS
Diagnostic
Supports up to 2,048 devices
Supports BiGuard SSL VPN series security appliances
Ideal for service providers

System Requirements

Client Browser: Microsoft IE 6.0 and later

Server Requirements

- CPU: Pentium 4, 2.6GHz or faster
- RAM: 1GB or more

Operating Systems

- Windows XP Pro Edition
- Windows 2000 server (*)
- Linux distributions (*)

*Notes:

1.(*)For future release

2.Specifications in this datasheet are subject to change without prior notice.

V012407