

# **Billion router emergency repair guide**

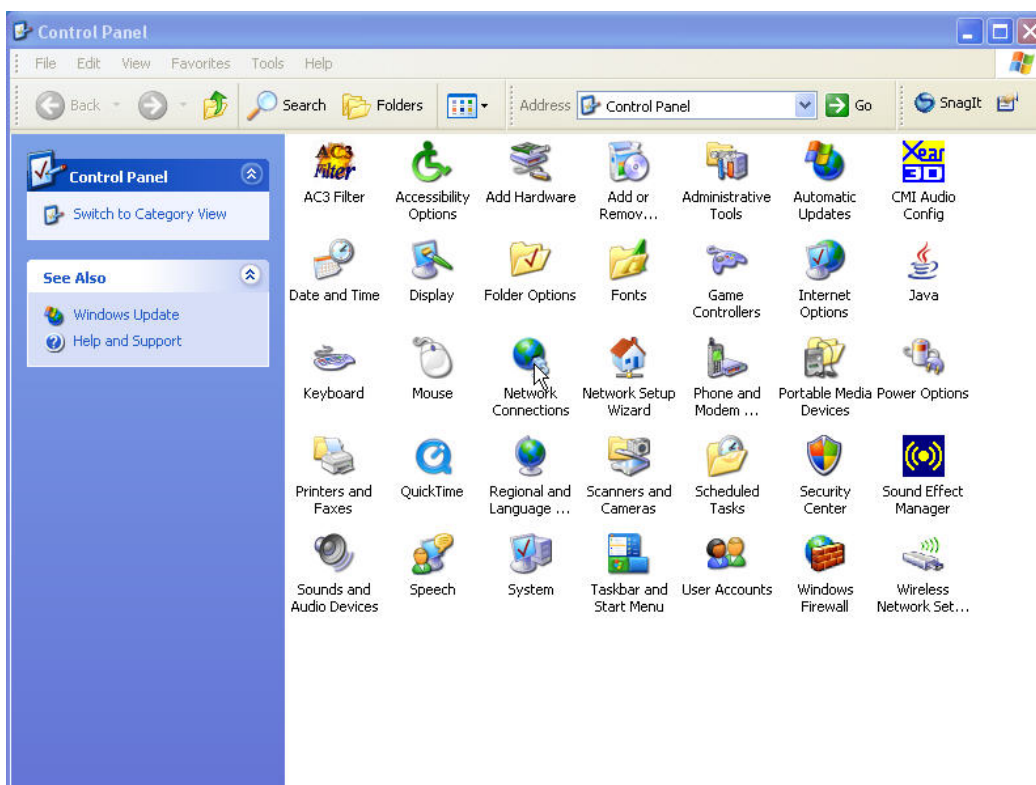
Ver:1.0 by M.C 06/2006

## **What you need:**

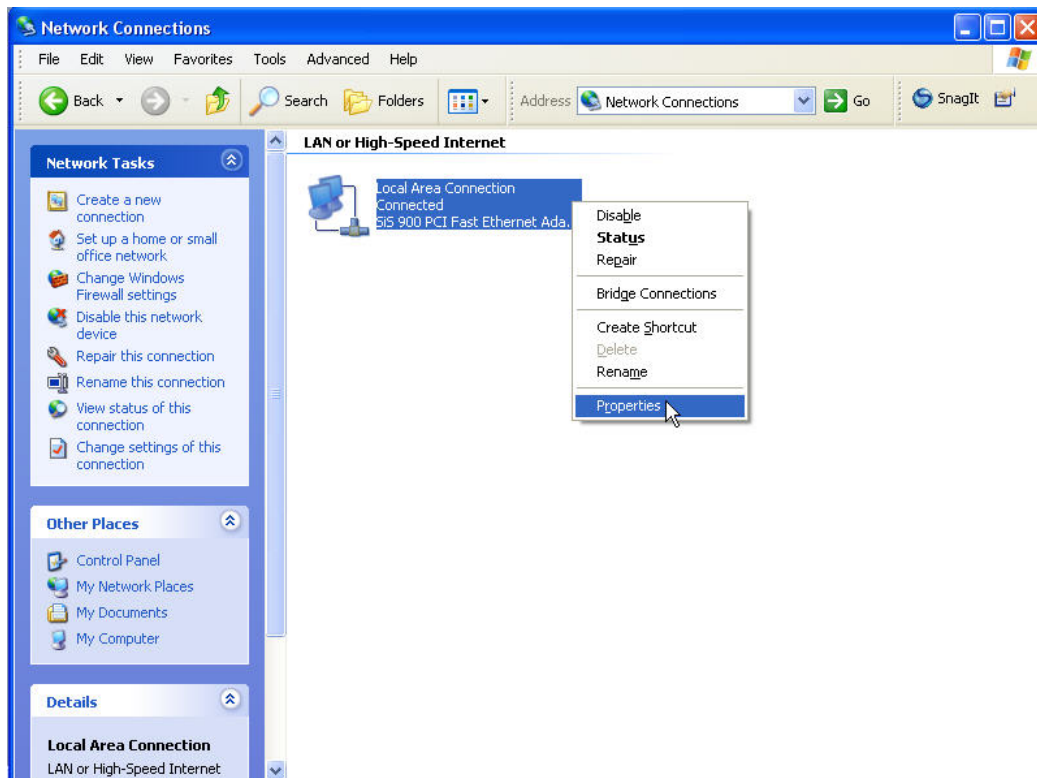
- The Billion router console cable
- An Ethernet RJ-45 cable
- The Reflashv400 Billion utility (Reflashv400.exe)
- A firmware file for the utility (.cem file extension usually)
- A PC running Windows XP with a serial (RS232) port

## **What to do:**

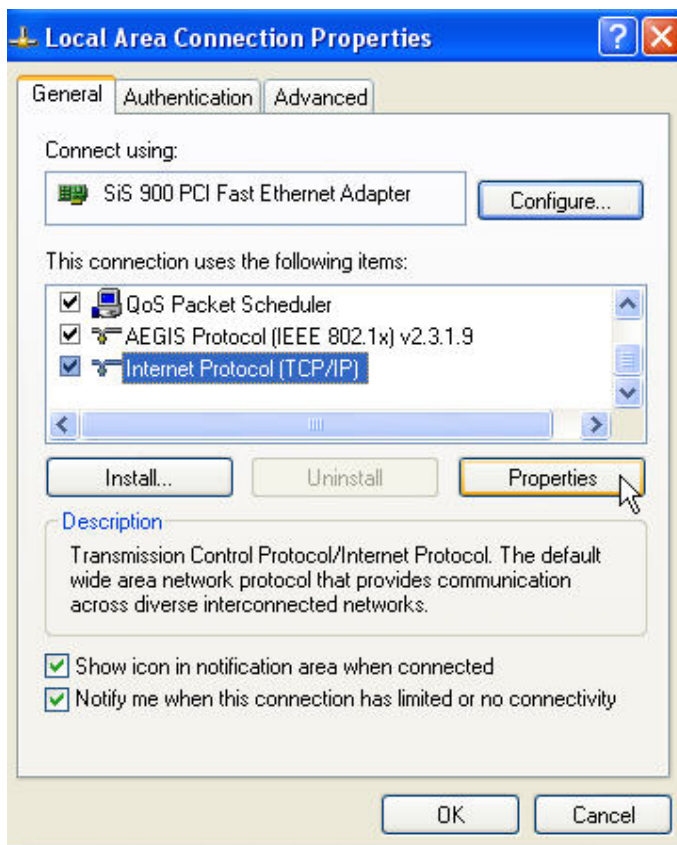
- 1) Do not turn on your Billion router.
- 2) Make sure the Ethernet (RJ-45) cable and the console cable are connected to your computer.
- 3) Please go to the **Control Panel** and click on **Network Connections**.



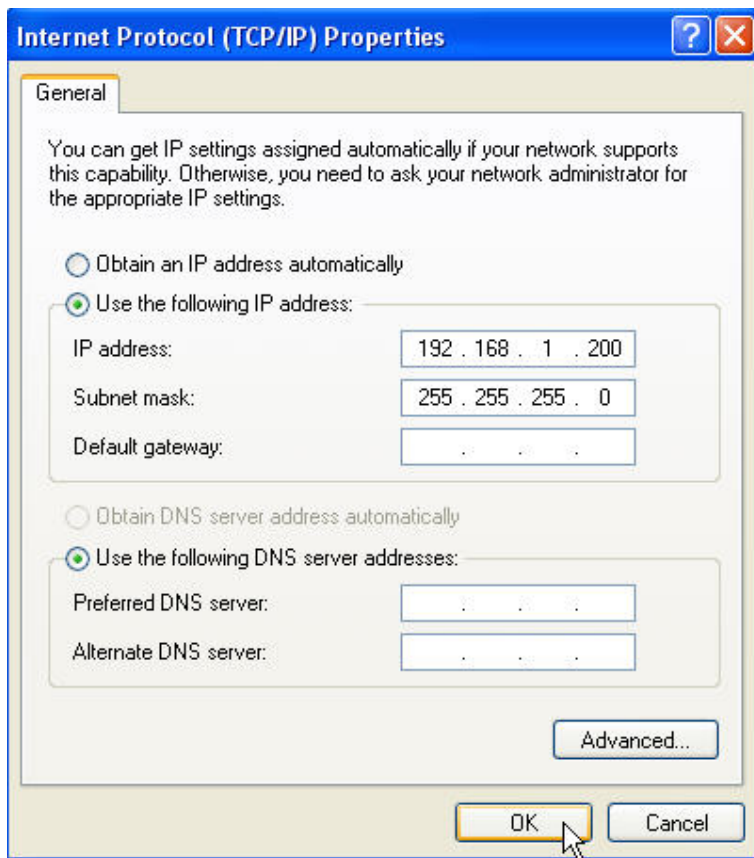
4) In the Network Connections, right click on your **Local Area Connect** > **Properties**



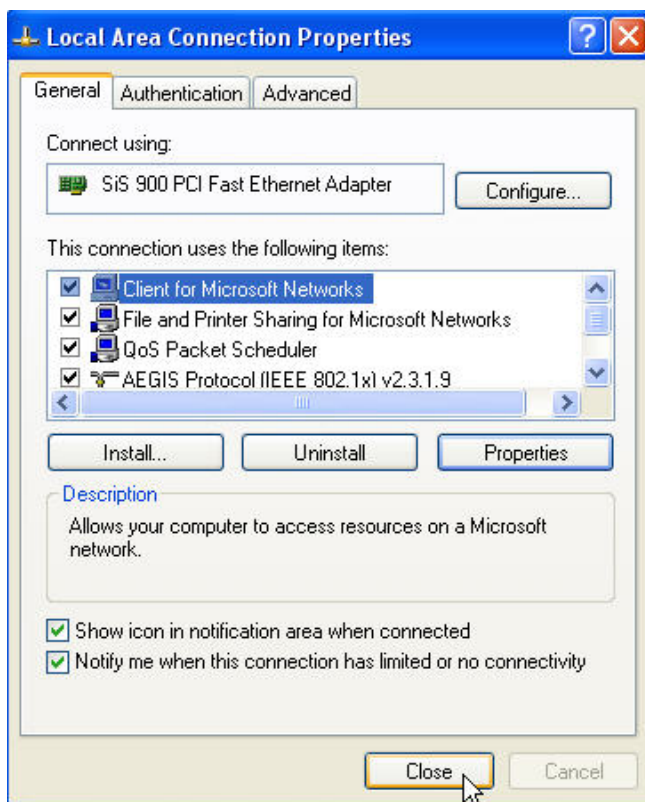
5) Then select **Internet Protocol (TCP/IP)** > **Properties**



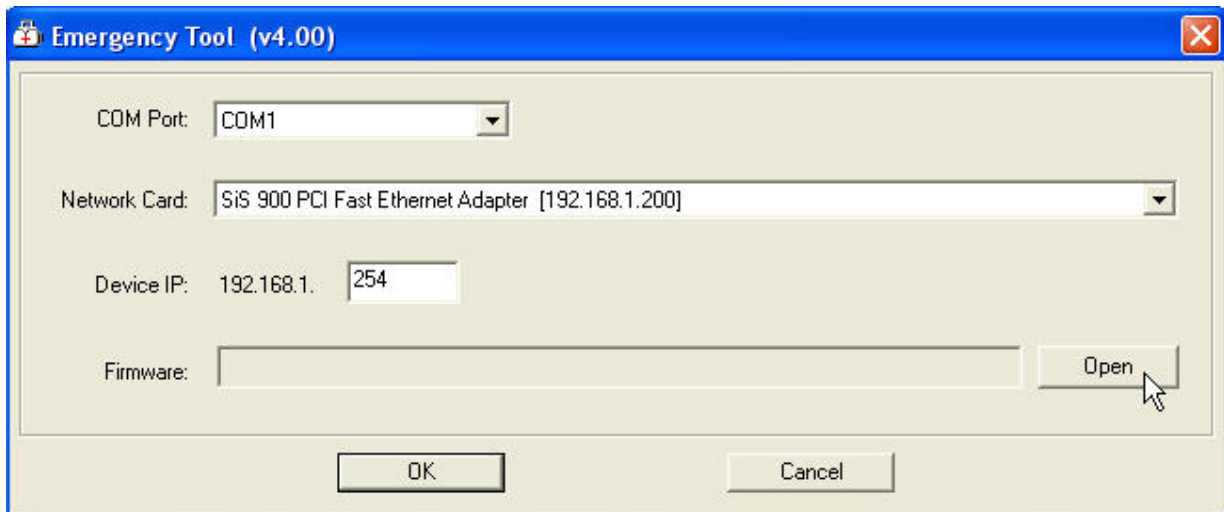
- 6) You now need to enter a static IP for your computer in the 192.18.1.xxx subnet (e.g. 192.168.1.200) and the subnet mask of 255.255.255.0 > then press **OK**.



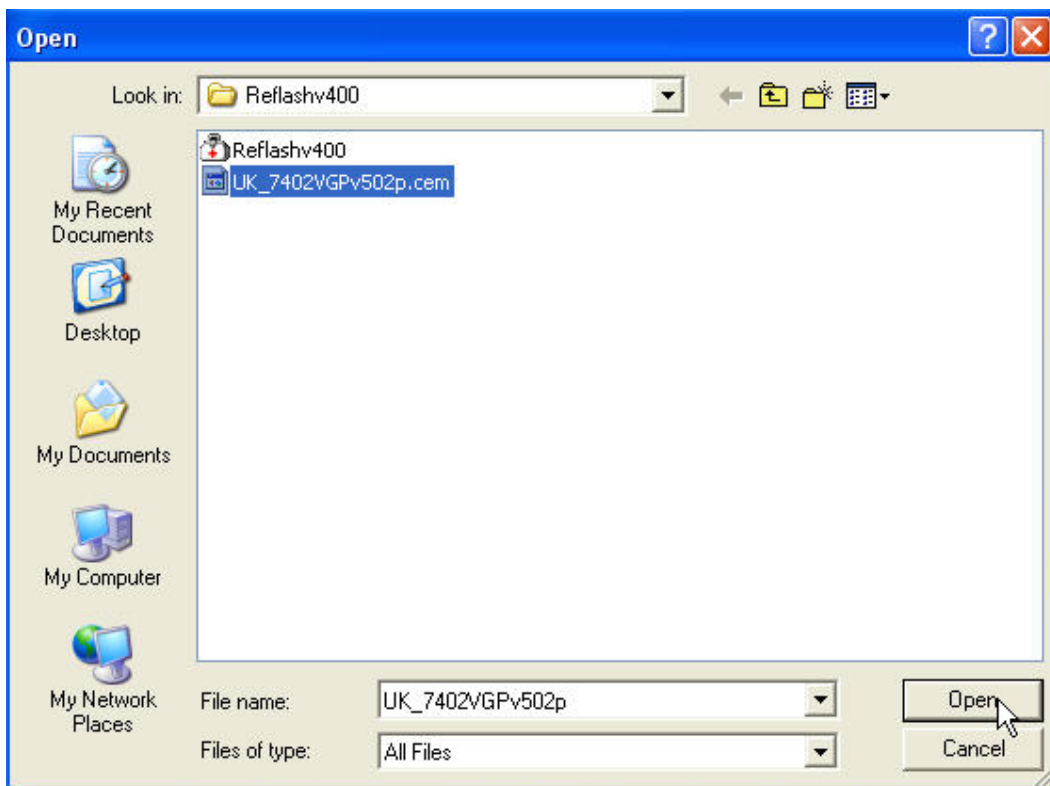
- 7) You should then be back on the Local Area Connection Properties page again, please press **Close** to complete the process of manually assigning an IP address to your computer.



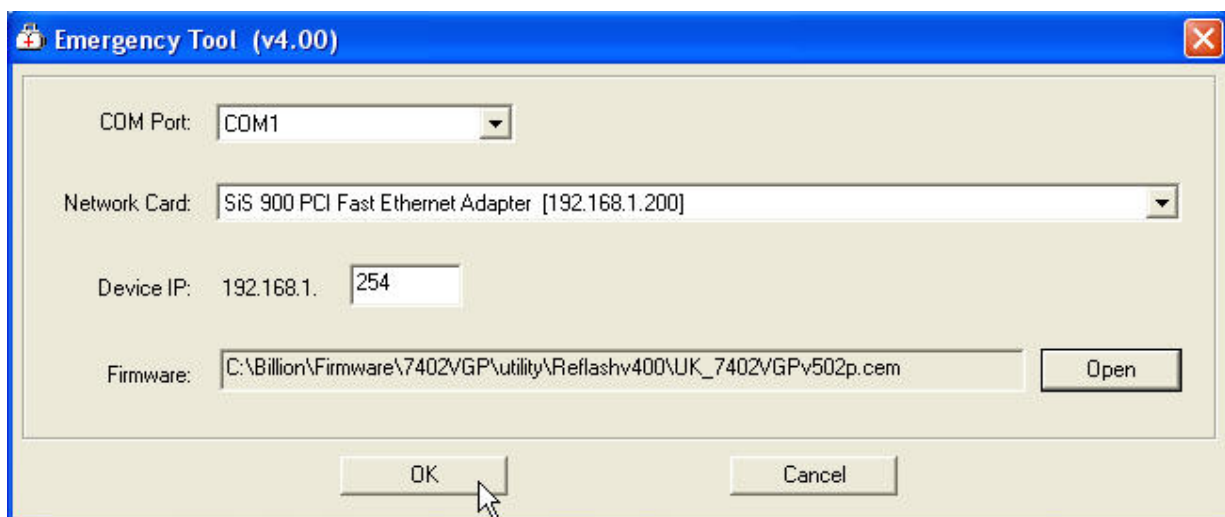
- 8) We now need to start the Billion router utility program (Reflashv400.exe), start it by double clicking on the program icon.
- 9) You should now see the Utility interface. Please select the appropriate **COM port**, **Network card** and input the **Device IP of 192.168.1.254**. Then please press **Open** to browse for the firmware file on your computer.



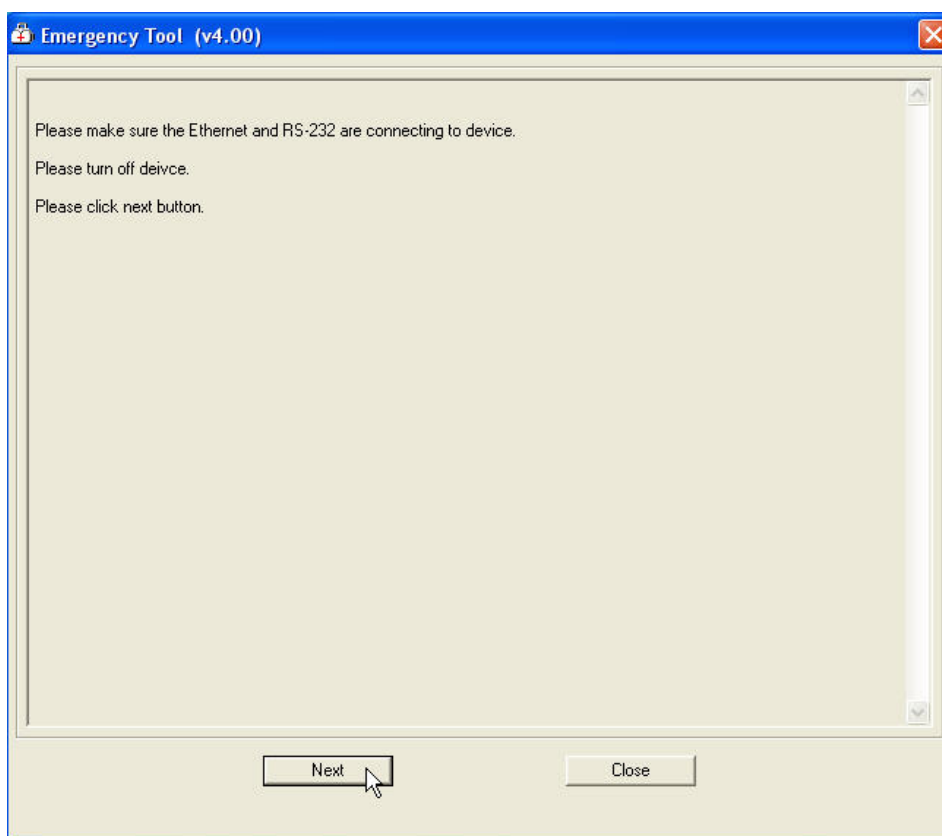
- 10) Browse for the firmware file (.cem) on your computer might require you to select **All Files** under the **Files of type**. Once the correct file is found and selected, please press **Open** to open the file.



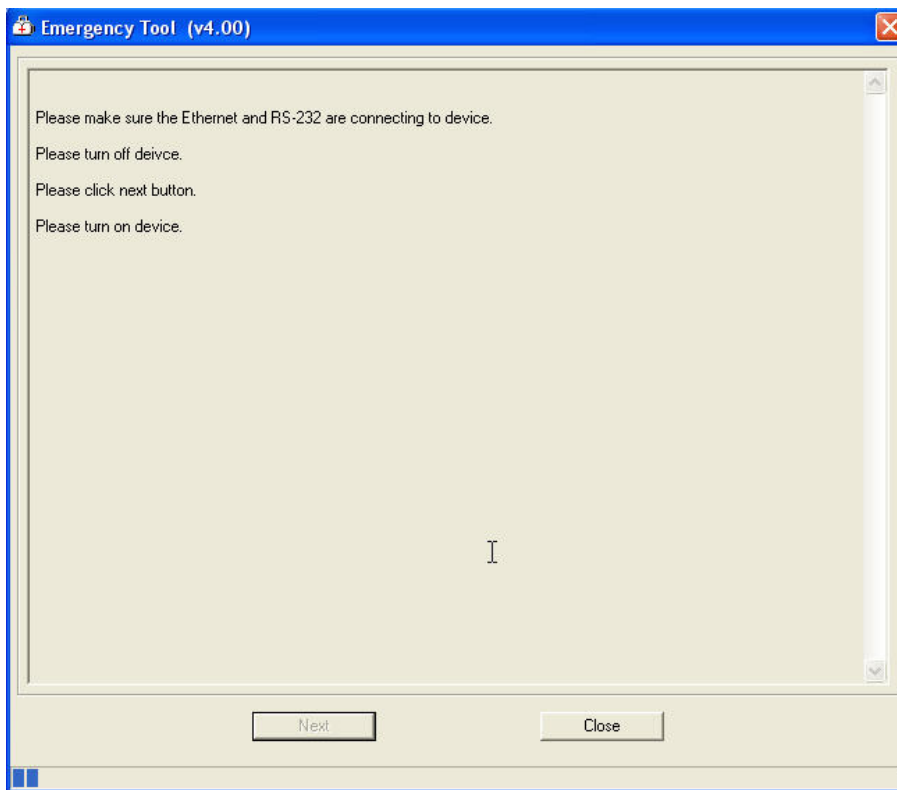
11) You are now back on the utility's interface, please press **OK** to proceed.



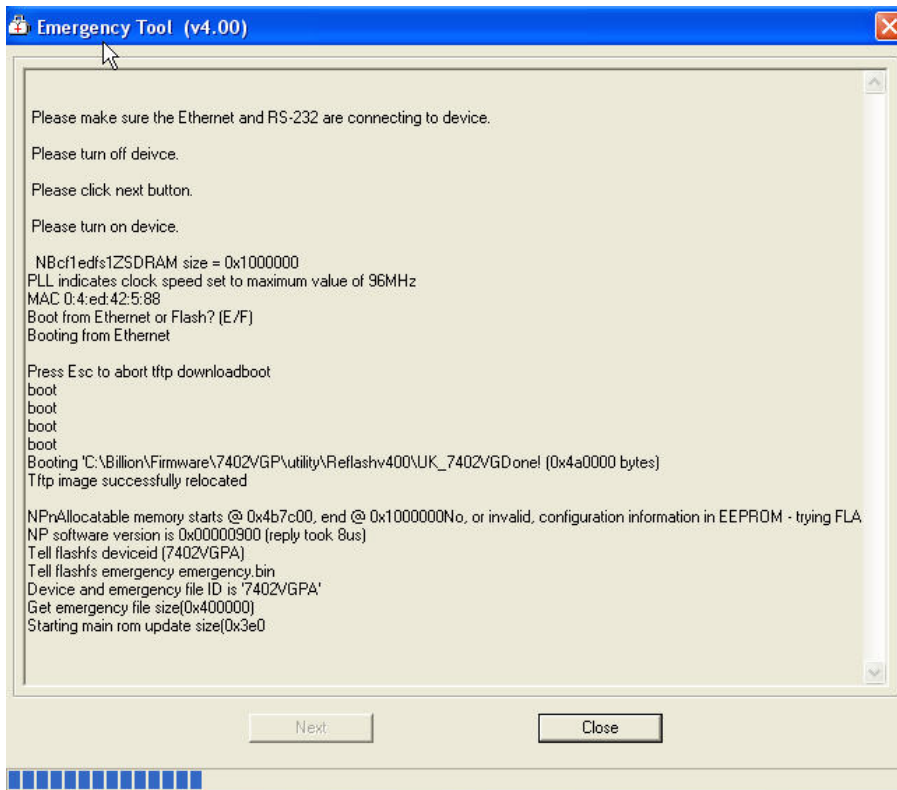
12) Then please press Next.



13) By following the on screen instruction, please turn the router on to initiate the reflash procedure.

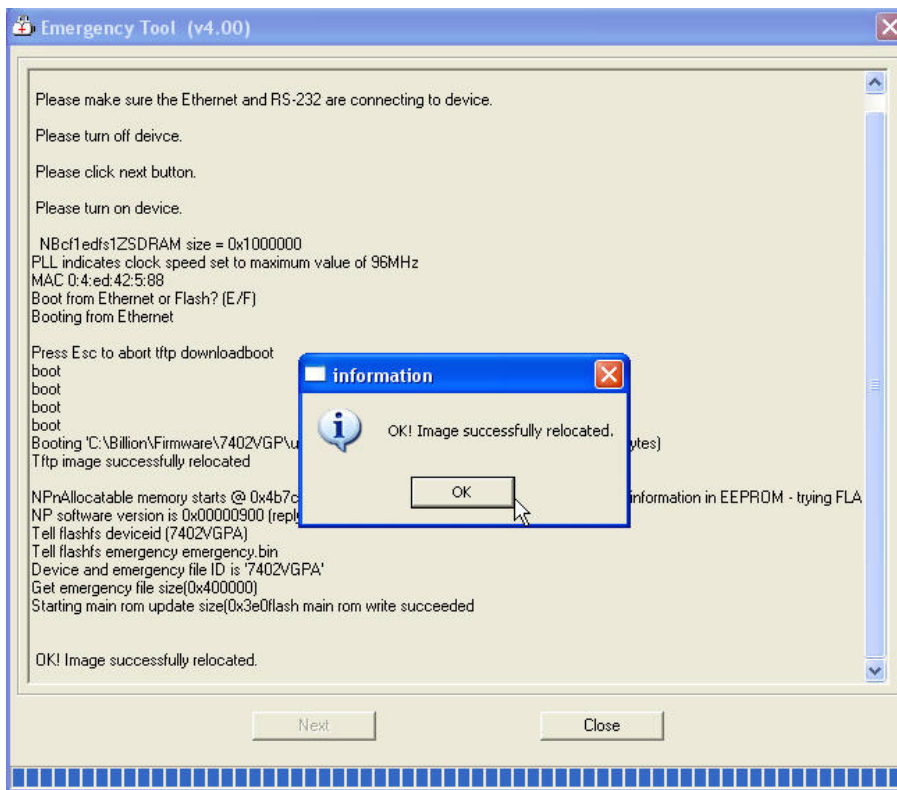


14) Please follow the on screen status for the progress of the reflash process.

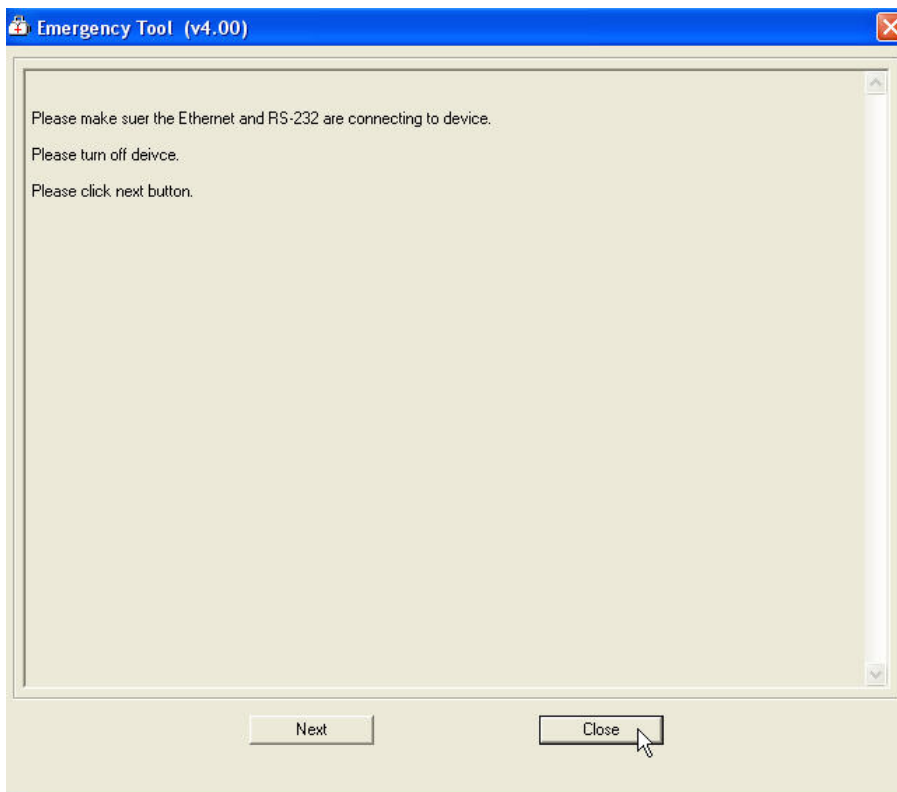


15) The process usually takes around 5minutes to complete and it might involve several attempts.

16) A new window will prompt you once the process is successfully completed. Please click OK to acknowledge.



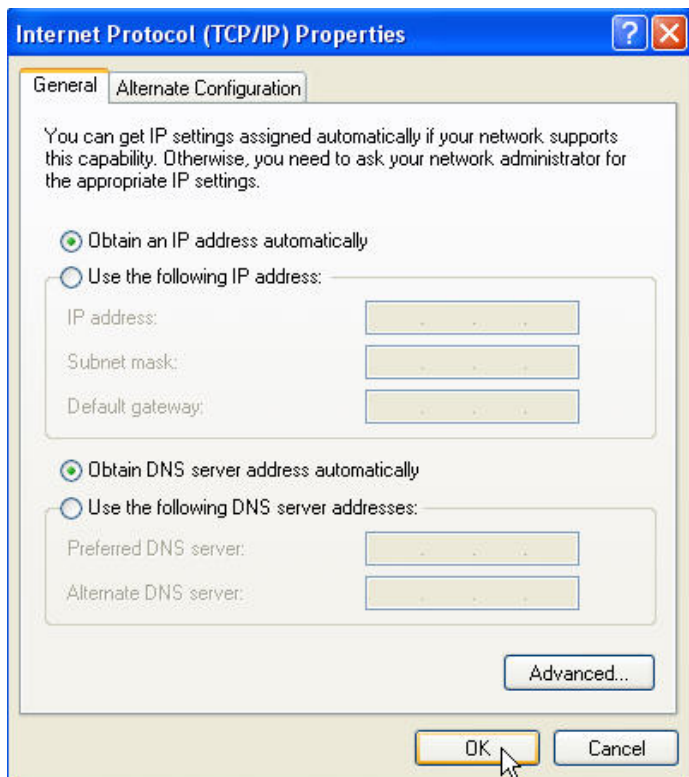
17) The router recover process is now completed. You can now click on **Close** to shutdown the utility.



18) Your router should now restart

19) You will now need to set your computer back to obtain IP address automatically from the router by repeating steps 3-6. On step 6 please make the changes back to the windows default on **Obtain an IP address automatically** and **Obtain DNS server address automatically** as show in the diagram and then press **OK**.





- 20) You should now be able to access the router via the browser at its **default IP address:** <http://192.168.1.254> and the default **Username: admin** and **Password: admin**.
- 21) Please note that the recovery firmware file might not be the latest firmware version so please visit our website (<http://www.billion.uk.com>) to check and update the firmware after the recovery process accordingly.