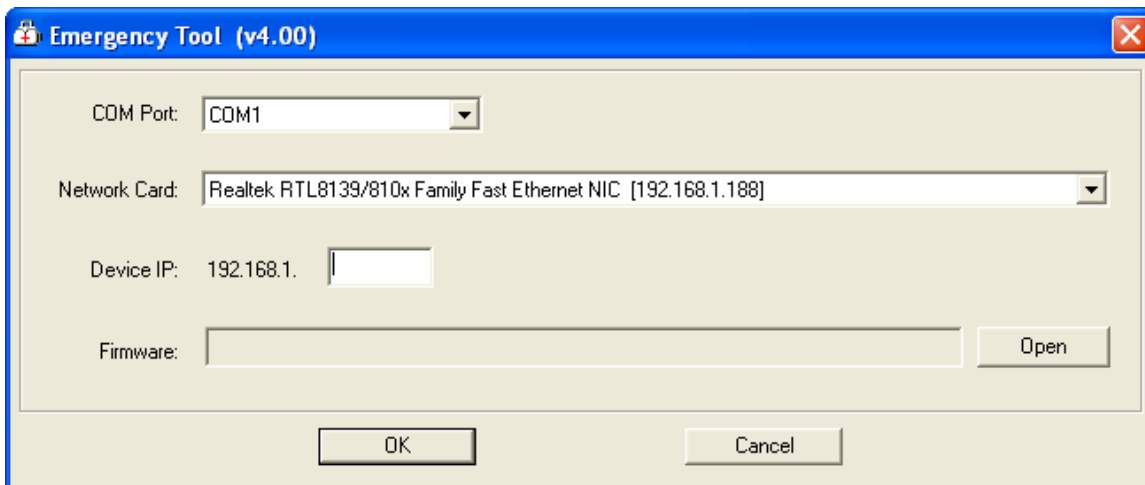


# Getting Started with Emergency Tool

**Tool version: 4.00**

### Step 1:

Double click the file “Reflashv400.exe” to start the Emergency Tool which has shown as below.

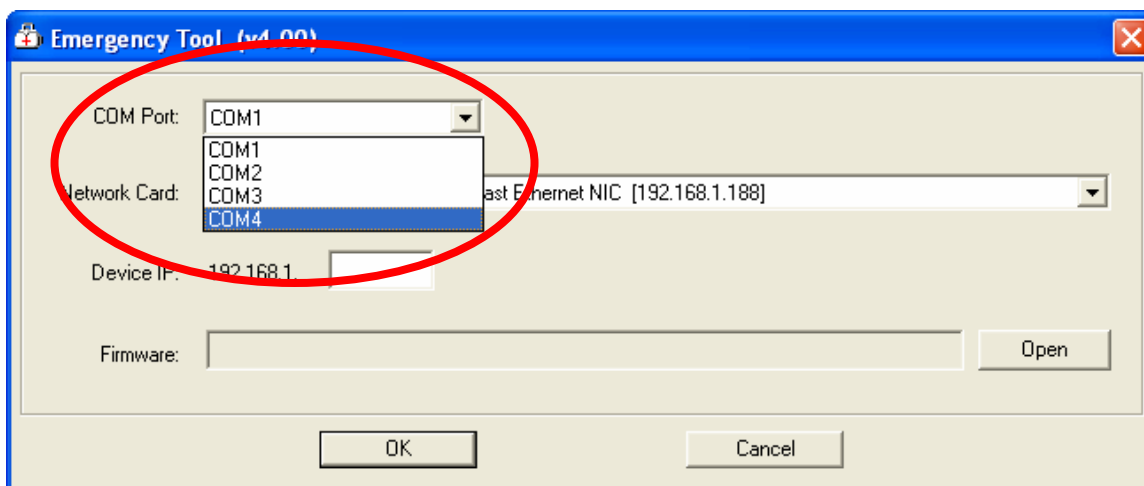


***All HyperTerminal programs MUST to be closed first when running this Emergency Tool.***

***The fixed IP should be used in your PC's network setting.***

**Step 2:**

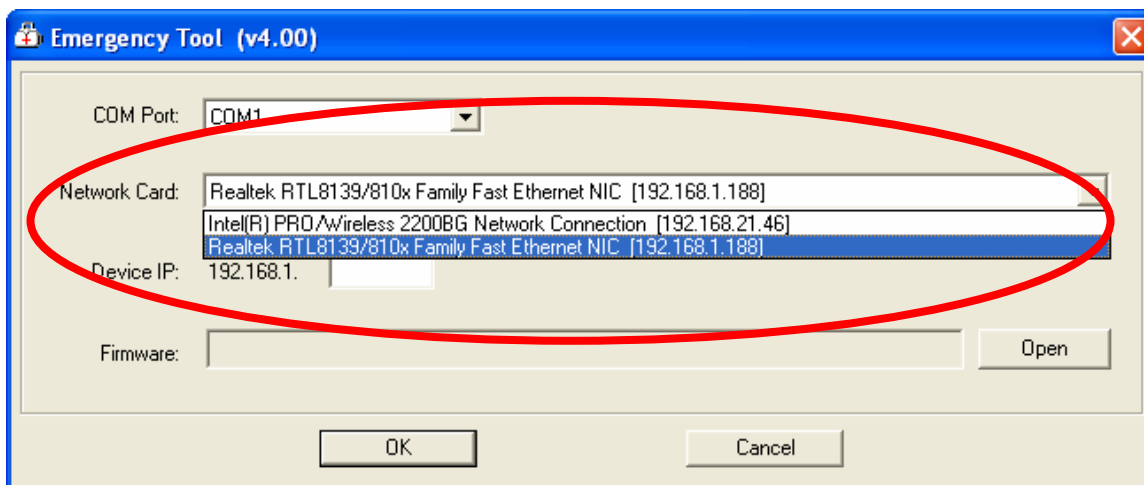
Select the current COM Port in which is connected to the PC.



### Step 3:

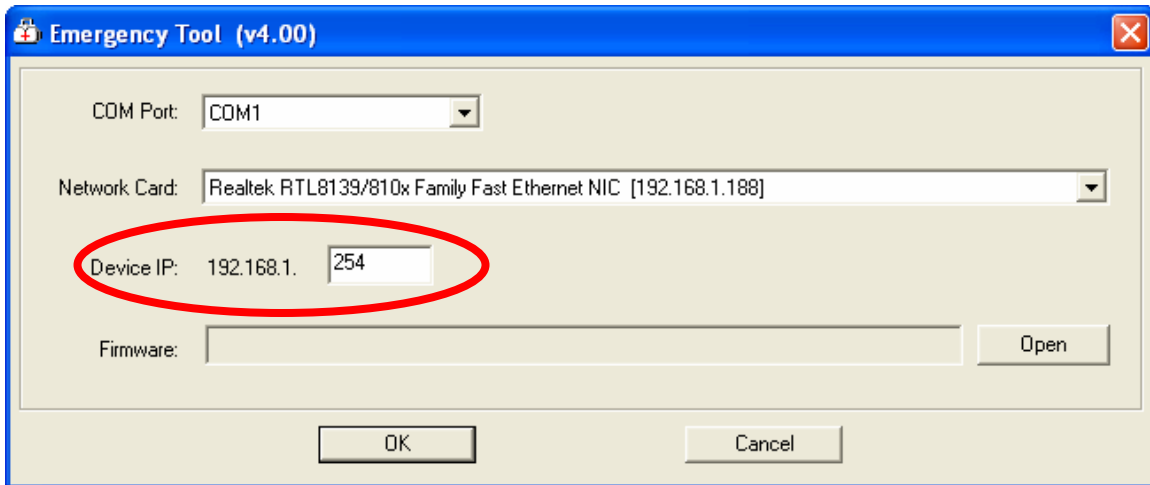
In the **Network Card** field, you can find all installed Network Cards or NIC in your PC.

Please select the current Network Card you are using and connecting to Router.



#### Step 4:

Giving an IP address that will be assigned to Router in the **Device IP** field. Please make sure the IP address is not being assigned to any other PC or device.



Emergency Tool (v4.00)

COM Port: COM1

Network Card: Realtek RTL8139/810x Family Fast Ethernet NIC [192.168.1.188]

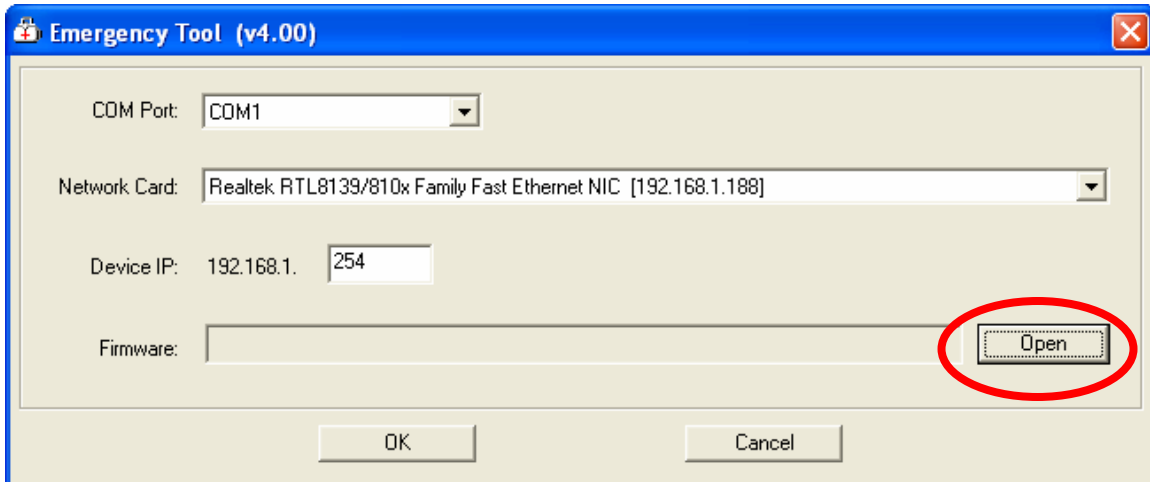
Device IP: 192.168.1. 254

Firmware:  Open

OK Cancel

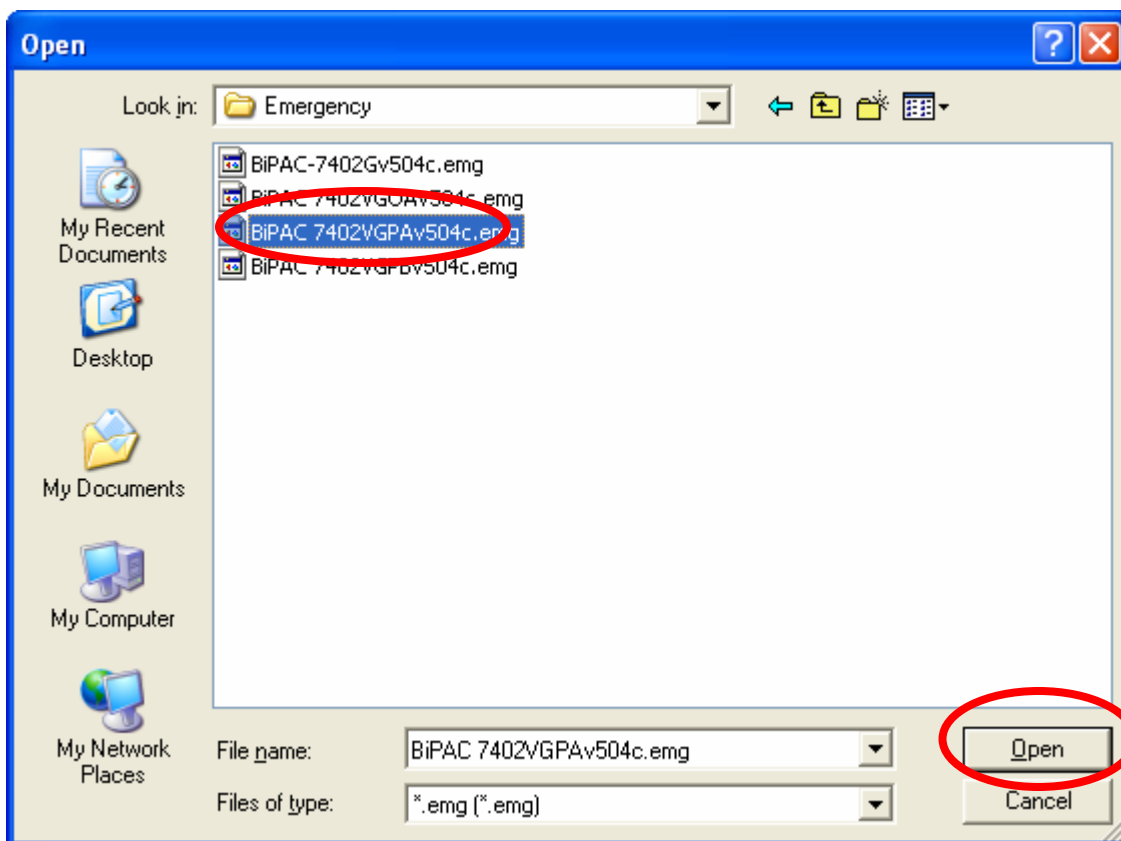
**Step 5:**

Click **Open** to find and select the emergency file that will be loaded to your device.



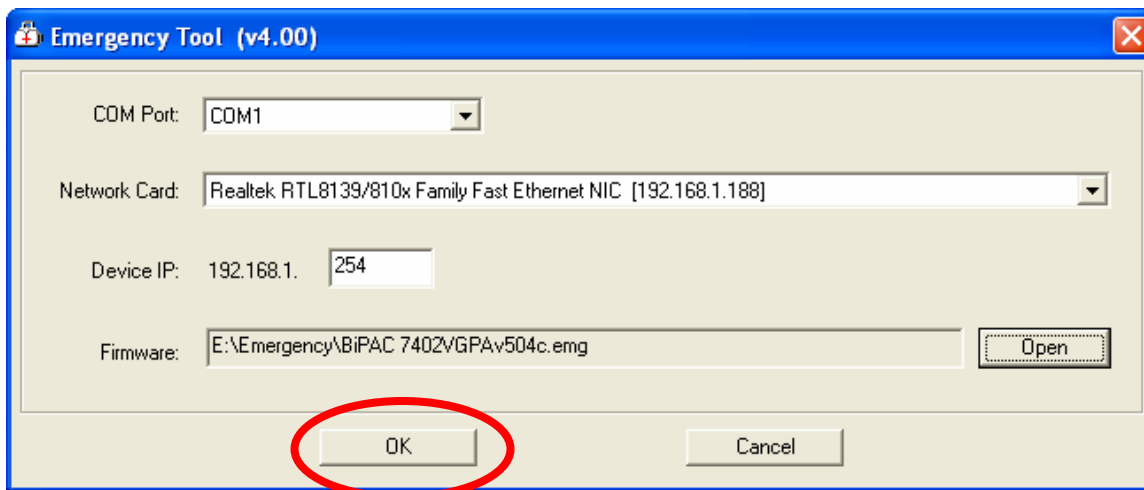
**Step 6:**

Select **\*.cem** or **\*.emg** file and then click **Open**.



**Step 7:**

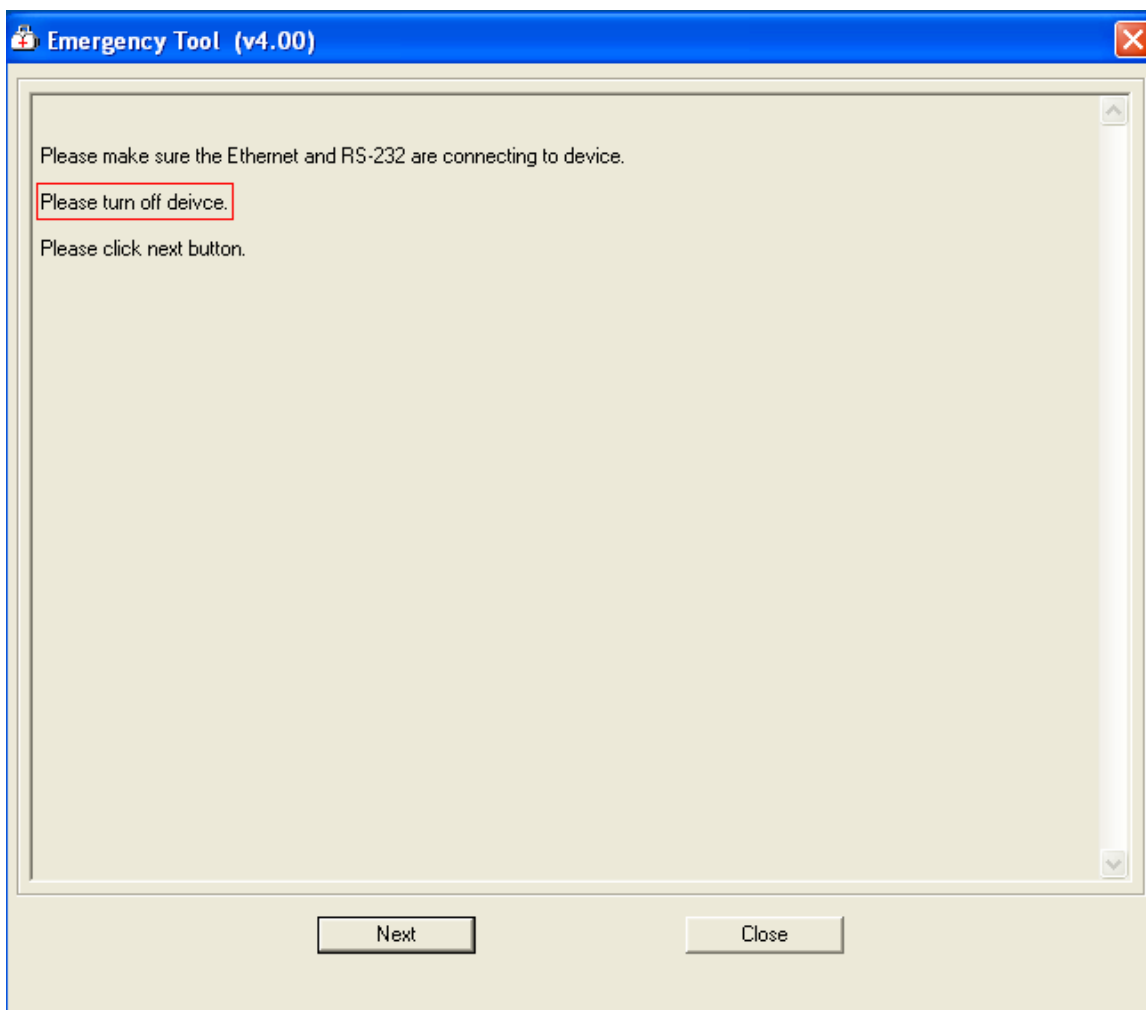
Click **OK** to the next step.





**Step 8:**

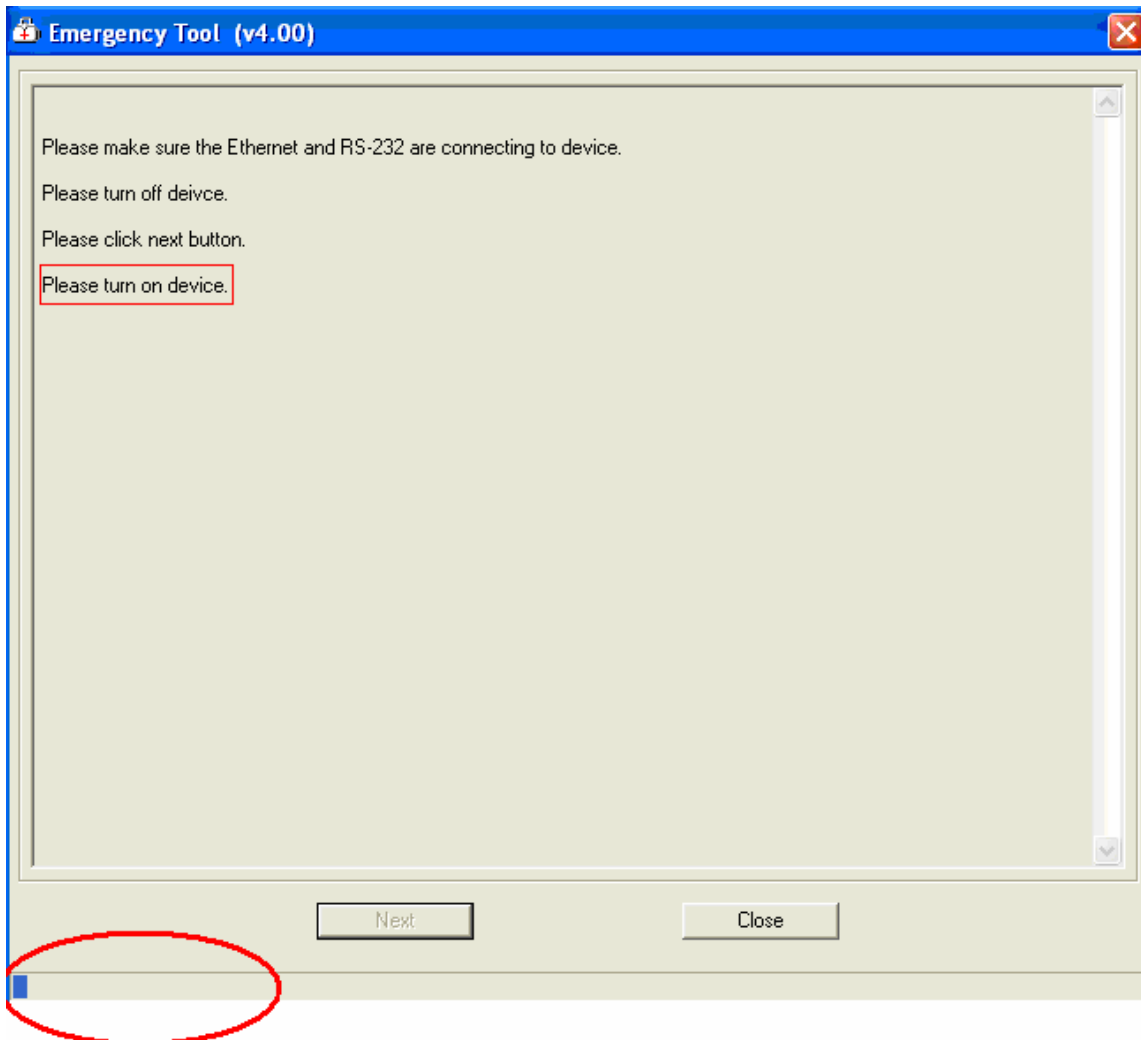
Please **Power OFF** the device and then click **Next** to continue.



### Step 9:

Now, **Power ON** the device and you will see the progress bar starts running. .

**Note:** Please **DO NOT** power off or unplug the Ethernet and/or Console cable at any time while in progress.

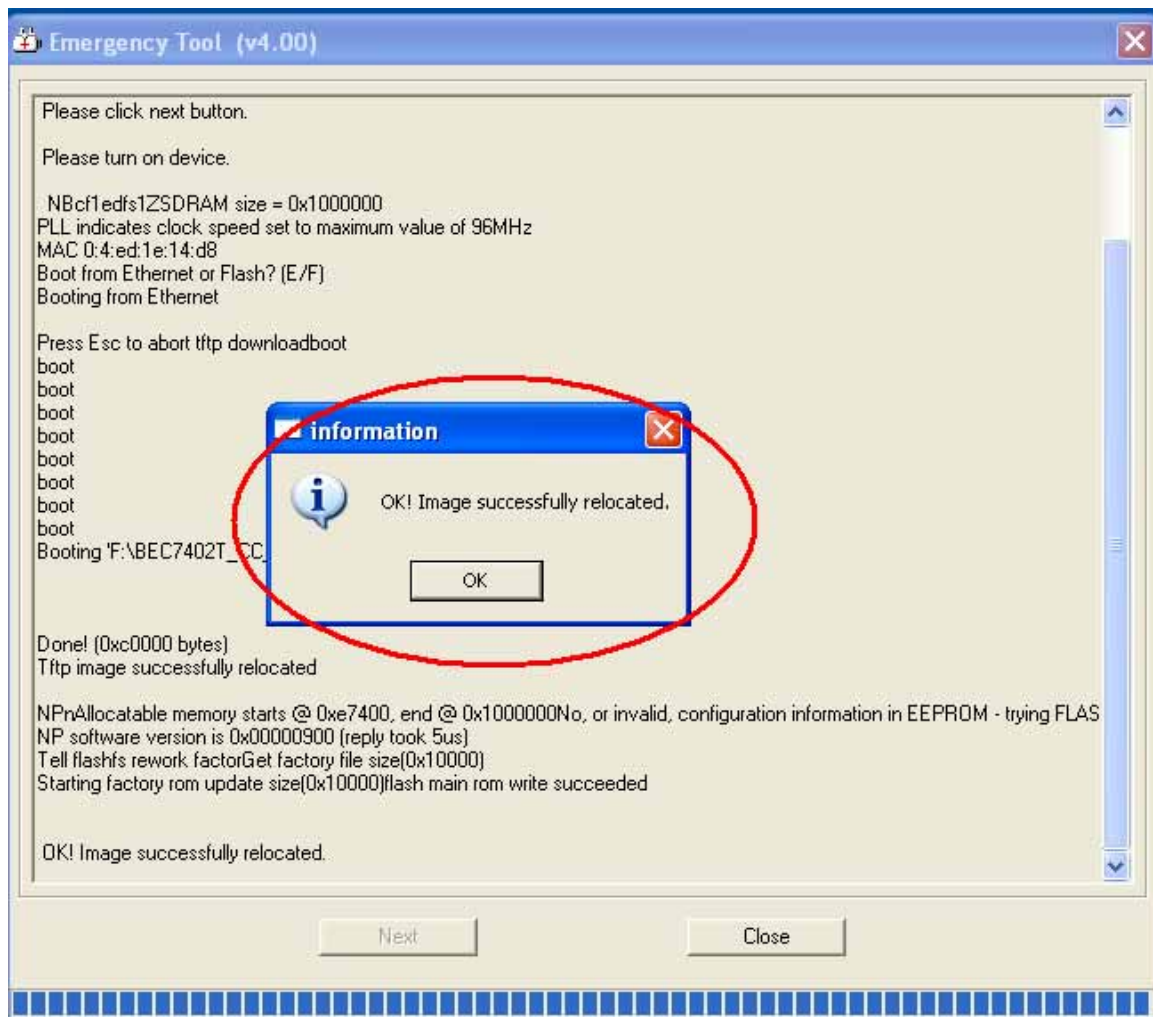


**Step 10:**

If the recovery process is being successfully, you will see **“OK! Image successfully relocated.”** and then click **OK** to proceed to the next step.

If an error message is popped, double check if cables are tighten and correctly setup and the COM port or Network card or IP address (refer to Step 2,3 and 4) is input correctly, Or try to utilize this tool on other PC.

**Note:** This emergency tool can operate with most of the NIC cards. If you found your PC's NIC card(s) does not work with this tool, please try it on other PCs.



### Step 10:

Now, **Close** this tool and **turn off and on** the device.

Once you turn back on the device, you should be ready to logon to the device WEB GUI and to surf the Internet.

