

**Wireless 802.11n****Instant Hotspot****High Speed Connection****Wall Plug Mount****10/100 Mbps Ethernet Port**

Wireless-N Wall Plug Access Point

Instant hotspot in every room of the house

The BiPAC 3100SN is a networking router with an integrated 802.11n access point that offers you an instant hotspot in every room of your house or in a public space like a café or conference room. With this device, you can easily share multi-media applications, such as IPTV, online games, and audio streaming with family or friends without the need of wired networks. Simply plug the BiPAC 3100SN into a nearby power socket as a bridge over Ethernet devices, such as a wired modem, wireless router, PCs, set-top-boxes, and game consoles, and enjoy your wireless coverage without dead zones!

Wireless 802.11n high performance

The 802.11n standard is the new generation of wireless networking, delivering better speed, range and reliability to support bandwidth intensive applications. It supports data rates up to 300Mbps and is backward compatibility with 802.11b/g equipments. With an integrated 802.11n wireless access point, the adapter can bridge wireless connections of up to 6 times the speed and 3 times the wireless coverage of an 802.11b / g network device.

Flexible bridge and repeater mode

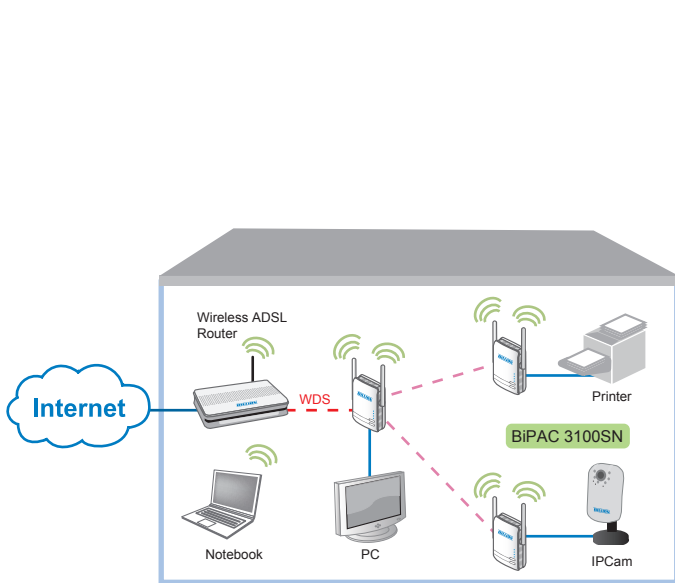
With simple configuration of the BiPAC 3100SN, users can simply connect to their peripheral devices by selecting the bridge mode, or set up a further wireless network, sharing with different IPs by using the repeater mode.

Easily set-up, robust security features!

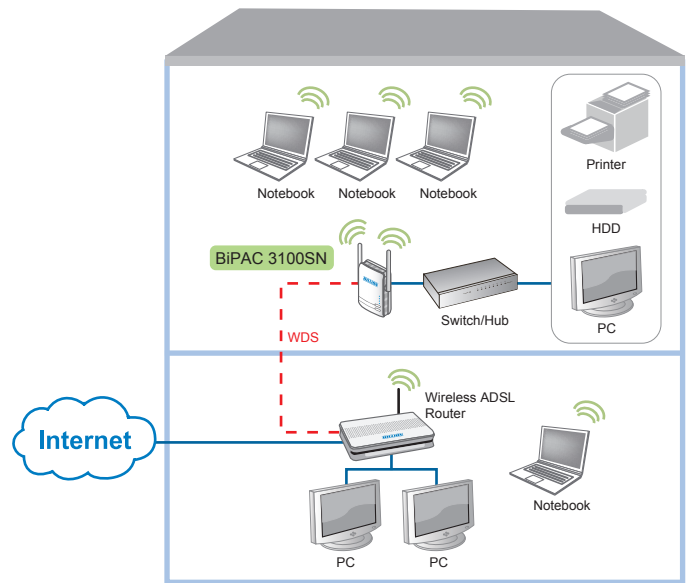
The Wireless Protected Access (WPA-PSK / WPA2-PSK) and Wireless Encryption Protocol (WEP) features enhance the level of transmission security and access control over Wireless LAN. The device also supports the Media Access Control (MAC) data communication protocol and the Wi-Fi Protected Setup (WPS) standard to prevent unauthorized access to the network. Users can easily set up the security by pressing the Wi-Fi Protected Setup (WPS) button.

**Ideal for
Residential users**

- Extended wireless coverage of up to 3 times the range of 802.11g products
- WPS (Wi-Fi Protected Setup) for easy setup
- WDS repeater & bridge function supports
- Auto channel select
- Wireless MAC access control prevents unauthorized access
- Supports Triple Play applications such as IPTV, VoIP and high-speed Internet access
- Supports 10/100 BaseT Ethernet



▲ WDS Bridge MODE



▲ WDS Repeater / Lazy MODE

Features & Specifications

Standards

- Ethernet specifications: IEEE 802.3, IEEE 802.3x, IEEE 802.3u, Auto MDI/MDIX

Supported Operating Systems

- Windows 98 / 98SE / Me / 2000 / XP / Vista / 7
- Other 10/100 Base-T Ethernet devices

Power Supply Specifications

- Input: 100~240V AC, 50~60Hz
- Protection: OCP, OVP, SCP

Wireless-N (device connection)

- Compliant with IEEE 802.11n, 802.11g and 802.11b standards
- 2.4 GHz~2.484 GHz frequency range
- Auto channel select
- Up to 300Mbps wireless operation rate
- WPS (Wi-Fi Protected Setup) for easy setup
- 64/128 bits WEP supported for encryption
- Wireless Security with WPA-PSK/ WPA2-PSK support
- WDS repeater & bridge function supports
- Wireless MAC access control prevents unauthorized access

Hardware Specifications

Physical Interface

- AC power plug
- 2x 2dbi antennas
- WPS button
- Reset button
- RJ-45 compatible
- LED display:
 - POWER
 - WLAN
 - ETH

Physical Specifications

- Dimensions (W, D, H):
4.42" x 3.05" x 1.75"
(112.4mm x 77.4mm x 52.1mm)

Operating Environment

- Operating temperature: 0 ~ 40 °C
- Storage temperature: -20 ~ 70 °C
- Humidity: 20 ~ 95% non-condensing